



Candidate Brief

Legislative Drafter



Contents

WELCOME LETTER	3
JOB PROFILE	4
PERSON SPECIFICATION	5
THE PACKAGE	7
Duration of appointment.....	7
Salary package	7
Taxation	7
Relocation	7
Flights.....	7
Pension	7
Education allowance.....	7
Access to medical/dental services.....	8
Housing.....	8
Timetable for recruitment and selection process	8
HOW TO APPLY	8
STANDARD PRE-EMPLOYMENT CHECKS	9
References	9
Professional Membership/Qualification Checks/Verification of Identity	9
Criminal Record Checks	9
Pre-Employment Health Assessment	9
THE LAW AND REGULATION DIRECTORATE	11
The Directorate.....	12
Our Structure.....	12
Our Mission.....	12
Our Vision	13
Our Values and Behaviours.....	13
The Legal Services Team	14
1 Services	14
2 Key drivers.....	15
The Court System.....	15
Laws of the Falkland Islands	16
ABOUT THE FALKLAND ISLANDS GOVERNMENT	17
APPENDIX 1 - STRUCTURE OF THE GOVERNMENT	18
APPENDIX 2 - GENERAL FACTS ABOUT THE FALKLAND ISLANDS	19
The People	19
The Economy	19
Tourism	21
Geography/Climate.....	21
Islands Living – key facts.....	22
Currency & Banking:	22
Electricity:	22
Fuel:	22
Telecommunications:	22
Shopping:	22
Eating out:.....	23



Welcome Letter

Introduction

The Falkland Islands provide an extremely interesting and challenging environment for any lawyer. We are a small directorate right at the centre of Government.

There is a pressing and on-going need for new legislation, both primary and secondary. This arises from the continuing implementation of the Islands Plan (which sets out the legislative priorities of the recently-elected Members of the Legislative Assembly and their goals and aspirations for the future development of the Islands). This is also an important time for the Falkland Islands as the prospect of hydrocarbon development brings with it the possibility of population and economic growth.

As one of two Legislative Drafters, you will be able to influence legislative developments and guide and support colleagues across Government in ensuring that robust, practical and sustainable legislation is enacted. As a Legislative Drafter in a British Overseas Territory you will also be part of a small but select group of international lawyers.

What we do not only has a direct impact on our local population, but also reflects on the standards of British justice around the world.

This is an exciting job with a real opportunity to make a personal impact and lasting change. Your ability to drive your own area whilst contributing more widely is vital for this role.

There is never a dull day and the range of work that we all do is extremely varied.

I hope you will be very interested in the role.

With best wishes,

Simon Young

Attorney General of the Falkland Islands and South Georgia and South Sandwich Islands

JOB PROFILE

Job Title:	Legislative Drafter		
Department:	Law & Regulation		
Reports to:	Head of Legal Services	Grade:	Falkland Islands Government - Grade A
Job Purpose			
To draft legislation, advise and undertake related activities for the Falkland Islands Government (FIG) and the Government of South Georgia and the South Sandwich Islands (GSGSSI).			
Role Specific Accountabilities			
<ul style="list-style-type: none"> • Draft primary and secondary legislation and related guidance. • Provide drafting advice to Legislative Assembly, Executive Council, Government departments, committees and working groups. • Assist in keeping the laws of the Falkland Islands and of South Georgia and the South Sandwich Islands under review and make proposals for the enactment of new laws and the amendment and repeal of existing laws. • Take part in the work of relevant committees and working groups. • Facilitate consultation with appropriate stakeholders with regard to proposals for new legislation and the amendment and repeal of existing legislation. • Draft Executive Council papers with regard to proposed legislation and the amendment and repeal of existing legislation. • Instruct, liaise with and supervise external legislative drafters. • Work effectively with the existing legislative drafter and colleagues in the Legal Services team and with Government departments and stakeholders. • Assist in improving drafting and office practice and procedures in the Legal Services team. <p><i>The job description is not an exclusive or exhaustive definition of your duties. You shall undertake such additional or other duties as may reasonably be required by FIG commensurate with your role and grade.</i></p>			
Additional Information			
<p>The post-holder must be prepared to quickly acquire a good working knowledge of the Constitution of the Falkland Islands, the functions of its decision-making bodies, and of Falkland Island law (including UK legislation as it applies to the Falkland Islands) and also of the legislative framework of South Georgia and the South Sandwich Islands.</p> <p>Criminal Record Checks: (This post is regarded as a sensitive post). All applicants for Government posts will be asked to disclose convictions upon application. Criminal records will only be considered for recruitment purposes when the conviction record is relevant. Having an 'unspent' conviction will not necessarily bar a candidate from employment. This will depend on the circumstances and background to the offence(s). Any information given will be treated as completely confidential and will be considered only in relation to the post to which the application refers. Failure by a candidate to reveal information that is directly relevant to the post applied for could lead to the withdrawal of an offer of employment.</p>			

PERSON SPECIFICATION

Criteria	Essential	Desirable	Assessment Method
Education and Qualifications:			
Educated to 'Degree' standard, (or equivalent)	✓		A
Admitted as a Solicitor or called as a Barrister	✓		A
Honours Law Degree	✓		A
Work Experience:			
At least five years' post qualification experience as a Solicitor or Barrister	✓		A
A minimum of three years' experience as a Legislative Drafter in a Commonwealth country, the Republic of Ireland or a British Overseas Territory	✓		A
Knowledge and Skills:			
Ability to effectively manage and prioritise a challenging and varied portfolio of work, meet tight deadlines and maintain a client-focused approach	✓		I/R
Highly developed interpersonal skills including the ability to develop effective working relationships at all levels, e.g. with the Governor, Legislative Assembly Members and senior civil servants, etc	✓		P/I/R
A methodical approach to work with clear attention to detail	✓		A/I/R
Proficient in Microsoft Word and Outlook	✓		A/P/R
Good administrative and organisational skills	✓		A/I/R
Excellent written and verbal communication skills	✓		A/I/P
Good problem-solving skills	✓		I/R
Ability to supervise effectively if required	✓		I/R

Falkland Islands Government – Person Specification (Continued)			
Criteria	Essential	Desirable	Assessment Method
Knowledge and Skills continued:			
Ability to work under pressure and deal with difficult situations whilst remaining calm and self-controlled	✓		I/R
Ability and willingness to work outside normal working hours and to travel within and outside of the Falkland Islands, as and when required	✓		I
Personal Attributes:			
Effective and supportive team member	✓		I/R
Excellent influencer	✓		A/I/P
Sound judgment	✓		I/R
Self-reliance and motivation	✓		I/R
Acceptance of responsibility and accountability	✓		I/R
Committed to the need for absolute confidentiality	✓		I/R
Flexible and adaptable approach to work	✓		I/R

Method of assessment:

A - Application Form

I - Selection Interview

P – Presentation/Practical Exercise

R - Reference

The Package

Duration of appointment

The appointment will be for a fixed-term of two years in the first instance. It may be extended by mutual agreement with the Falkland Islands Government (**FIG**), subject to operational requirements and performance.

Salary package

The salary range for the post is currently £47,610 to £71,465 per annum. Starting salary will depend on qualifications and experience.

In addition, the successful applicant will be eligible for an annual gratuity payment equal to 25% of the basic salary earned, subject to satisfactory performance. Salary at the top of the range plus gratuity would equate to £89,331 per annum. The salary and gratuity are subject to Falkland Islands taxation which is substantially lower than in the UK.

Taxation

The Islands current tax rates are as follows:

Personal Allowance £15,000 pa

(NB The first £12,000 of chargeable income is taxed at the rate of 21%, with the remainder being taxed at 26%)

Relocation

If relocating from the UK or Europe, there is a relocation grant of £2,000 for those coming to post unaccompanied or £2,500 if accompanied by a spouse/partner; an additional £100 is awarded for each dependent child that accompanies the individual to post. If relocating from elsewhere in the world, the grant is £3,000 for those who are unaccompanied or £3,500 if accompanied by a spouse/partner (plus £200 per dependent child coming to post).

Flights

In addition to flights to the Islands to take up the post and upon satisfactory completion of the contract, employees on contracts of 2 years are also eligible for a mid-appointment paid concessionary return flight between the Falkland Islands and the country of recruitment for themselves and each member of their dependent family who accompany them to post. (Alternatively, the value of such 'mid tour' flights can be used for holiday travel to the destination of your choice).

Pension

There is an option for the employee to contribute to the Falkland Island Pension Scheme (though no employer contributions will be made) with potential to transfer in funds from a recognised UK pension (subject to any residency criteria and UK pension scheme and FIPS criteria which may apply). Responsibility for confirming the eligibility of transfers sits with the employee.

Education allowance

Education for children up to the age of 16 years is provided free at schools in Stanley. If the successful applicant's dependent children are aged 16-18 years and undertaking GCSEs/A Levels (or their international equivalent), provision of post-16 education may be made available at a residential college in the UK. The boarding school fees will be met by FIG subject to a maximum of £8,200 per annum per child, and holiday visit flights will be provided for children attending boarding school. This allowance does not apply to any dependants undertaking any other category of studies or where a child will reside with family members, a guardian or nominated carer.

Access to medical/dental services

Overseas staff will have access to the Falklands' Health Service. Most services, (including prescriptions) are currently free to residents of the Falkland Islands. However, charges are made for some items and the Health Service reserves the right to alter the charges for medical services. At present charges are made for spectacles, dentures and cosmetic dentistry such as crowns and bridges. The charges are variable, based on the cost of the materials (including freight).

Housing

FIG maintains a housing stock from which it will make a house available to rent. Typical rents range from £350 for a one bedroom maisonette property to around £800 for a 4 bed detached house. Private Sector accommodation is also available although this can be limited.

Timetable for recruitment and selection process

Stage	Date
Closing Date for applications:	20 th May 2018
Interviews:	*Week commencing 28 th May 2018

***Exact date to be confirmed**

How to Apply

If you wish to apply for the role, please complete and submit an application form, together with a covering letter outlining how you meet the essential and desirable criteria specified in the job description and person specification and the reasons for your interest in the role.

You may attach a CV if you wish, but shortlisting will be done on the basis of information contained in the application form and covering letter. Please include your full contact details, including daytime and evening telephone numbers.

Application forms and further information about working in the Falkland Islands can be obtained by email at recruitment@sec.gov.fk

Completed application forms and accompanying cover letters should be submitted by email to recruitment@sec.gov.fk by the closing date noted above.

Standard Pre-Employment Checks

All candidates should note that FIG carries out the following pre-employment checks prior to appointing someone to a post. Any offer of employment will therefore be made on a conditional basis, subject to satisfactory checks being received. Where checks are found to be unsatisfactory, FIG reserves the right to withdraw any offer of employment.

References

All appointments are subject to at least two satisfactory references being provided. Please be specific when providing addresses/contact details for your referees. One of the references must be from your present employer or, if not currently employed, your most recent employer.

Professional Membership/Qualification Checks/Verification of Identity

Checks will be carried out to confirm any qualifications/professional memberships which are listed as 'Essential' in the Person Specification at the interview stage.

Applicants relying on qualifications equivalent to those specified are responsible for providing evidence of how their qualifications meet the required standard. If equivalence is not immediately clear, no enquiries will be made by FIG and the candidate's application may not proceed as a result. FIG reserves the right to make the final determination on the recognition of any equivalence.

You will also be required to produce original documents to verify your identity at interview, one of which must be photographic identification.

Criminal Record Checks

(This post is regarded as a sensitive post)

All applicants for Government posts will be asked to disclose convictions upon application. Criminal records will only be considered for recruitment purposes when the conviction record is relevant. Having an 'unspent' conviction will not necessarily bar a candidate from employment. This will depend on the circumstances and background to the offence(s).

Any information given will be treated as confidential and will be considered only in relation to the post to which the application refers.

Failure by a candidate to reveal information that is directly relevant to the post applied for could lead to the withdrawal of an offer of employment.

Pre-Employment Health Assessment

The Falkland Islands has good primary and secondary health care, but because of its geographical remoteness and size, it is not able to offer the full range of services that might be expected of a hospital of a similar size with more readily accessible resources.

Successful candidates will be required to undertake a pre-employment health assessment for the purposes of obtaining a work permit. The medical will normally be arranged with your own GP unless FIG advises otherwise. Such medicals will also be required for any dependants that are due to accompany you to post.

It is important to note that if you have complex medical needs or may need ongoing medical support that is not practically/physically available on the Islands or the provision of which is not economically viable, it is unlikely that you would meet the health standards required to obtain a Work Permit for the Falkland Islands. If any of your dependants also have such needs, they may not be able to accompany you to post as dependants on your Work Permit.

They would not, however, be prohibited from visiting the Islands, but this could only normally be done by means of a Visitors permit. For more information on any related Immigration issues, you can contact the Customs and Immigration Department on 00 500 27340.

If your dependants have special educational needs or if they are not able to access all aspects of the school curriculum in English without language support, this will be considered as part of the immigration process. While some support may be available, each case will be considered on its merits based on the capacity available within the particular year group in the relevant school. If your children have complex special needs which cannot reasonably be met from the resources available in the Islands, it is unlikely that immigration criteria would be met and so there may be no automatic right to reside in the Islands awarded under any Work Permit issued.

For more information on the Falkland Islands, please visit: <http://www.falklands.gov.fk>

The Law and Regulation Directorate

BACKGROUND

The Directorate

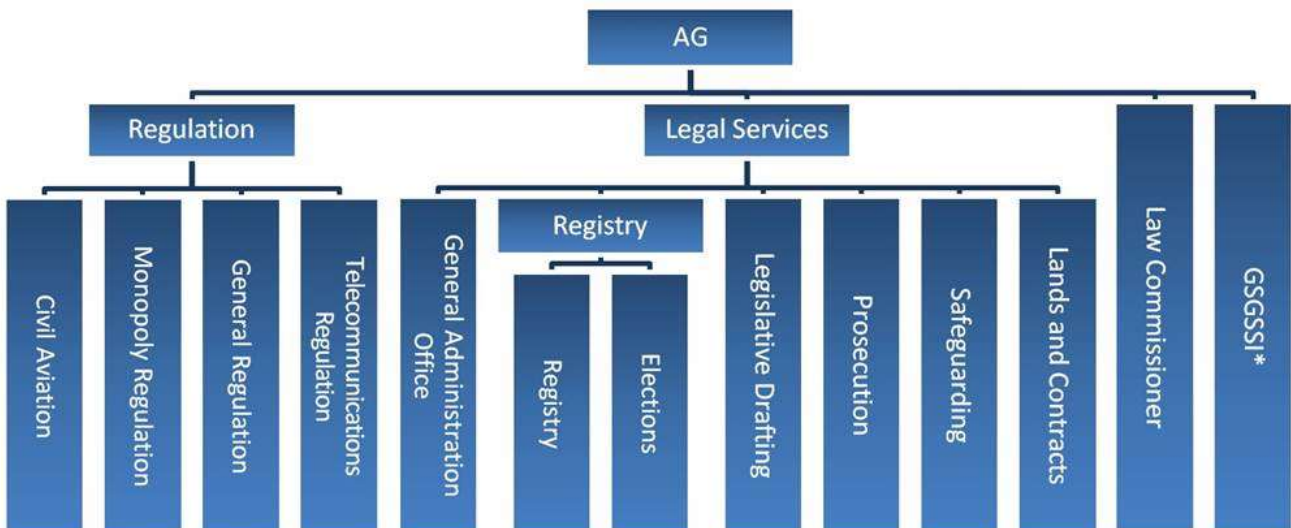
The Directorate has four services led by separate service heads who each report to the Attorney General. These services are crucial to the achievement of the Government’s ambitions.

- Legal Services supports Government in turning policy into legislation. We direct and conduct public prosecutions and act for FIG in all legal proceedings and transactions. We also support the development and delivery of Government initiatives by providing sound legal advice.
- The Registry provides a vital service to the community, local companies and co-operatives. In addition to providing registry services, it ensures elections are fair and the will of the people is freely expressed.
- Regulation protects the people of the Falkland Islands by regulating Civil Aviation and Telecommunications with an expanding remit over monopolies and general regulation.
- The Law Commissioner has arranged the publication of Falkland Islands laws online following the finalisation of the Revised Laws project and will continue to review, reform and update local legislation.

Recognising the variety of all these roles and the need to achieve best value with limited resources, it is important that we operate as a single unit. Our central administrative team facilitates this efficiency and joint working as well as delivering vital services as official publisher of the Falkland Islands Gazette, providing support to Government land administration and arranging public notarial services.

The Directorate also provides legal advice and support to the Government of South Georgia and the South Sandwich Islands, (GSGSSI) which is a separate British Overseas Territory.

Our Structure:



Our Mission

To serve the people of the Falkland Islands by:

- being trusted advisors to the Governor and colleagues in FIG to support the achievement of objectives set by Members of the Legislative Assembly in the Islands Plan
- supporting policy objectives by drafting legislation which gives effect to them in conformity with the Constitution and international obligations

- prosecuting crime and bringing actions on behalf of the Crown robustly and impartially - bringing offenders to justice, supporting the reduction of crime and promoting public confidence in the rule of law
- promoting good governance and decision-making by FIG
- maintaining national and international confidence in electoral and registry practices
- ensuring aviation safety and the fair and effective regulation of telecommunications, monopolies and unduly dominant businesses to avoid market abuse
- providing legal advice and support to the Government of South Georgia and the South Sandwich Islands.

Our Vision

To be the best Legal, Registry and Regulation service in any British Overseas Territory, given our size and available resources and to be recognised as such by the people of the Falkland Islands and internationally.

Our Values and Behaviours

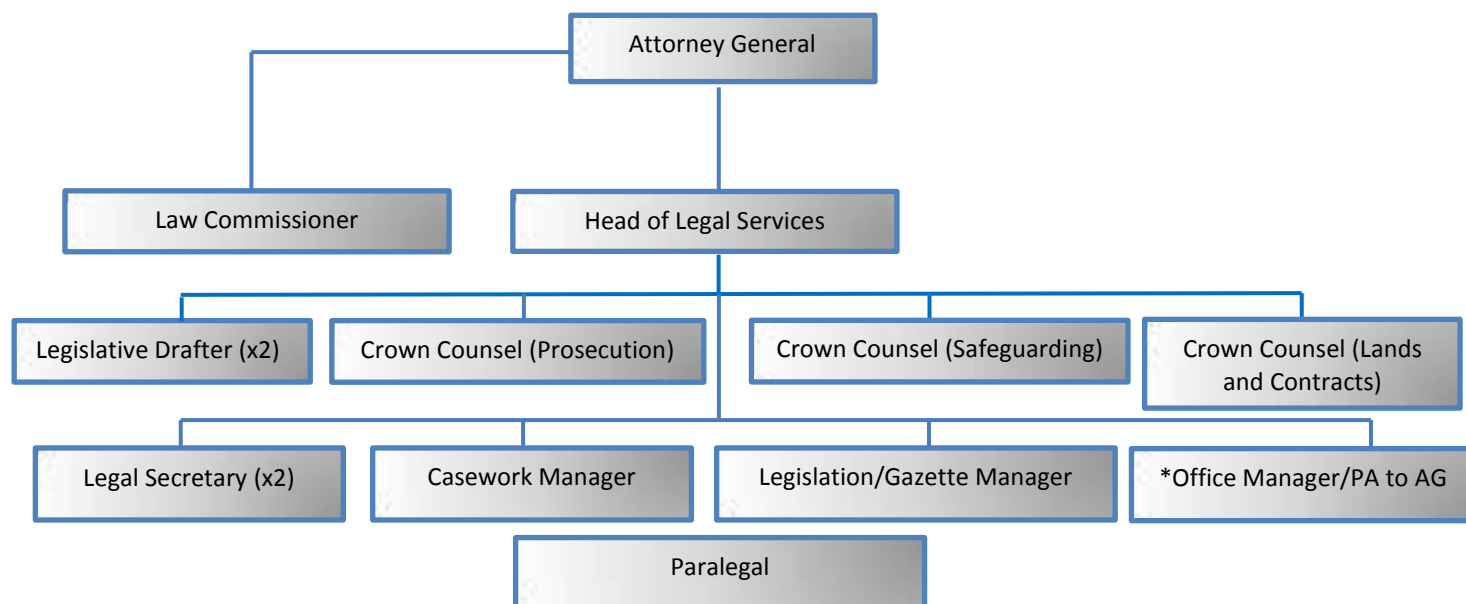
In the delivery of everything we do on a day-to-day basis, all the members of the Directorate are committed to behaving with:

- **Integrity** – we will do the right thing especially when it is the hard thing
- **Courtesy** – we will treat people courteously
- **Respect** – we will respect ourselves and show respect for others and their needs and views
- **Professionalism** – we will always seek to do things to the highest professional standards and seek to continually improve

These values underpin the way our services are delivered.

The Legal Services Team

The team consists of 14 staff (including the position on offer) and is structured as follows:



* Denotes post which is currently vacant but under recruitment.

1. Services

The Legal Services team provides the following services to FIG and also, to the extent relevant, to the GSGSSI:-

- **General legal service** - We aim to provide a high quality legal service. The service is critical to the successful implementation of the policies that FIG seeks to deliver. It includes Government contracting, land work, support on governance and decision-making and providing advice to every part of the Civil Service (including to the Chief Executive and the Governor of the Falkland Islands). This work includes the development of Government policy in the areas where the Attorney General has the leadership role. The Attorney General also discharges responsibility for the Falkland Islands Board of Trade and holds various other appointments.

The service includes a role in the management of Government lands, with the Legal Services team currently administering FIG's Lands Committee.

The Attorney General is also the Attorney General of South Georgia and the South Sandwich Islands and so Legal Services also support and provide legal advice to that Government.

- **Prosecution service** - We review cases investigated by the Royal Falkland Islands Police force, but also by other departments such as Customs and Immigration, Fisheries and Environmental Planning. We carefully analyse each case to determine whether the evidential and public interest tests are satisfied, suggest any further investigation if appropriate, advise on charges, and prosecute all cases in the Summary Court, Magistrate's Court and Supreme Court of the Falkland Islands.
- **Legislative drafting service** - We are responsible for the drafting of all laws (including bills and subsidiary legislation). Much of this is carried out in-house (and the role currently on offer is intended to play a leading part in discharging this function) although it may be outsourced to external drafters where appropriate (for example, complex tax legislation or other areas where specialist knowledge is required). We manage the legislative drafting programme which is formulated each year based on the priorities of the Legislative Assembly, as approved by Executive Council.

- **Law Commissioner** – The Law Commissioner has led a project to publish on-line the laws of the Falkland Islands. This project has recently been successfully completed and so the role has been extended to encompass the general review of those laws with a view to carrying out any necessary reforms, revisions and updating.

2. Key drivers

We are central to the effective working of Government and are involved in all levels of decision-making. We attend Legislative Assembly, Executive Council, Corporate Management Team and many other inter-departmental committees and working groups. Our advice has regard to the Constitution, the laws of the Falkland Islands (and South Georgia and the South Sandwich Islands) and our international obligations.

Internally we are driven by the policy ambitions of the Members of the Legislative Assembly, by legal work essential to the continuing provision of services by FIG, and by our role in helping to promote good governance.

Externally we are driven by changing economic and social circumstances, the actions of the population of the Falkland Islands and the FIG's response to current issues.

The Legal Services business plan commits us to:-

- provide the highest quality, cost-effective, legal services that meet the needs of FIG and the Governor, and command the confidence of the judiciary and the public, which are deliverable with the resources available
- deliver the prosecution service through the consistent, fair and independent review of cases, and through their fair and thorough presentation in court
- achieve realistic targets set for the legislative drafting programme
- review and modernise laws
- provide these services with the highest standards of integrity
- develop our staff for the benefit of their own careers and in the interests of FIG
- operate using appropriate systems for workload management, client care and electronic legal research

The Court System

The Court structure consists of the following legal tiers:

- Summary Court
- Magistrate's Court
- Supreme Court
- Court of Appeal
- Judicial Committee of the Privy Council

The Summary Court consists of one or more Justices of the Peace (in practice, there are usually three). It has jurisdiction roughly equivalent to that of a magistrates' court in England.

The Magistrate's Court is the most commonly used court in the Islands and is presided over by the resident Senior Magistrate. The Court has jurisdiction in criminal matters to deal with all offences except those

which are triable only on indictment. However, indictable-only offences are much more limited in scope than in England. There are no “either way offences”, and many offences which in England would be triable only on indictment are tried in the Islands in the Magistrate’s Court. The Senior Magistrate has sentencing powers similar to those of the English Crown Court.

The Supreme Court is presided over by the Chief Justice who is resident in the UK and visits the Islands when necessary. The Senior Magistrate also occasionally sits as an acting judge in this Court, which deals with indictable criminal offences and a variety of civil matters including matrimonial causes. The Supreme Court also has appellate jurisdiction in relation to the Summary Court and the Magistrate’s Court. Appeals from it lie to the Court of Appeal, and from there to the Judicial Committee of the Privy Council.

Laws of the Falkland Islands

‘Ordinances’ are made by the Falkland Islands legislature and are our principal sources of law. Such Ordinances are supplemented by local orders and regulations. However, some English Acts also have direct application to the Falkland Islands.

Falkland Islands laws (including subsidiary legislation) have now been consolidated and are available on-line (www.legislation.gov.fk). New laws are posted as and when implemented. This website also contains references to English laws which apply to the Falkland Islands.

About the Falkland Islands Government



The Falkland Islands are a UK Overseas Territory where executive authority remains vested in Her Majesty the Queen. This authority is exercised by HM's Governor on her behalf. The Governor is advised by an Executive Council, comprising three elected Members of the Legislature, the Chief Executive and the Financial Secretary. This forum is also attended by the Attorney General and the Commander British Forces South Atlantic. Executive Council follows a UK Cabinet model, with meetings that are held in private (usually monthly).

The passage of legislation, votes for expenditure and the annual budget (including taxation levels) are resolved by the Legislative Assembly. This comprises eight elected Members (three from Camp¹ and five from Stanley²), the Chief Executive and Financial Secretary. The Commander British Forces and Attorney General attend Legislative Assembly and are permitted to speak at it in matters related to their roles. The Assembly itself is presided over by a 'Speaker', who is elected by the Members of the Assembly. It currently meets monthly and its proceedings follow a UK Parliamentary model, except that the Chief Executive and Financial Secretary do not vote on legislation.

All eight elected Members are independent of political parties and each carry portfolios of services, which cover a wide array of diverse activities ranging from Treasury and Taxation, the Public Accounts Committee and Trade and Industry to Health and Medical Services and child protection.

There is a wider network of approximately 20 committees, each of which generally includes at least two elected Members and a mix of civil servants and lay members. The Standing Finance Committee, for example, considers and monitors the budget and includes all eight Members. Such committees now meet in public, under rules mirroring the UK's Local Government (Access to Information) Act. The intention is to speed up decision-making processes and strengthen transparency, accountability and scrutiny.

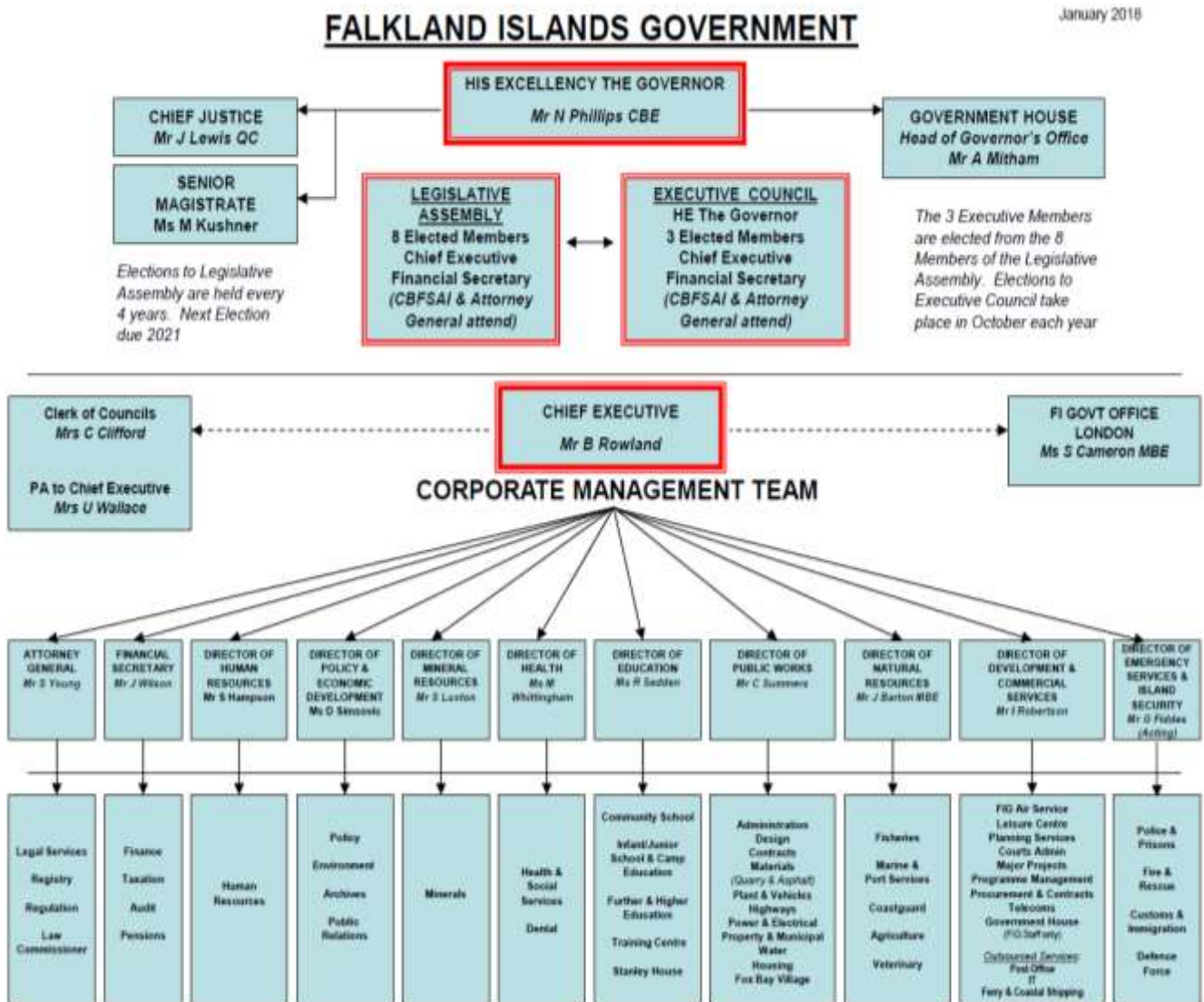
FIG operates against the background of 'The Islands Plan'. The Plan has been established to encapsulate the high level strategic aspirations agreed as being key to progressing the sustainable, economic, social and political development of the Falkland Islands for the benefit of all its residents. Elected Members' top priorities under the newly adopted Plan for 2018 - 2022 are:

- Self-determination and good governance
- Public diplomacy and international relations
- Community and culture
- Population and workforce
- Economic development
- Education and training
- Public Safety and security
- Health and community wellbeing
- Infrastructure
- Transport and communications
- Environment

¹ Camp – the countryside is known as Camp

² Stanley – the capital of the Islands

Appendix 1 - Structure of the Government



Government departments in the Islands' mirror the entire range of UK civil service departments and also those services which are often provided by local government and other NGO's elsewhere.

Directors of the departments meet regularly in a forum known as the Corporate Management Team (CMT), chaired by the Chief Executive, to consider corporate policy and strategy.

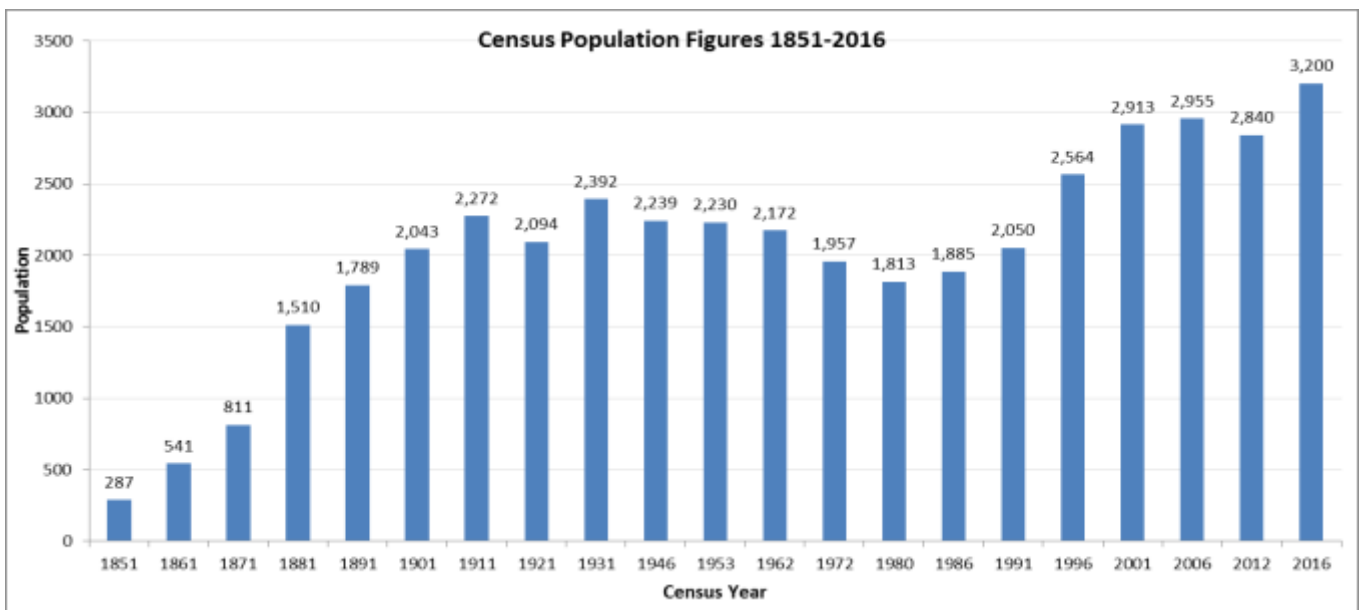
The business of Government itself is delivered by a core professional Public Service of about 600 permanent and temporary employees (of which around approximately 100 are officers on contract from outside of the Falkland Islands, having been recruited from locations such as the UK and elsewhere in the world).

Appendix 2

General Facts about the Falkland Islands

The People

The Islands have a usually resident population of approximately 3,400 people. Over 2,600 live in Stanley which is the southern-most capital in the world. The remainder of the population live in the countryside or “Camp” as it is referred to locally. The population itself is predominantly of British birth or descent and many can trace their family on the Islands back to the mid-nineteenth century. In addition there is a permanent military garrison at the Mount Pleasant Complex (MPC), some 35 miles west of Stanley, comprising UK military personnel and approximately 400 civilian workers and their dependants. The growth of the non-military population is highlighted in the graph below:



Note: The Graph shows the usually resident and present populations counted on each census night. Figures for 1851, 1861 and 1871 are estimated. Civilian personnel and their families based at MPC are included in census counts for 1996 onwards.

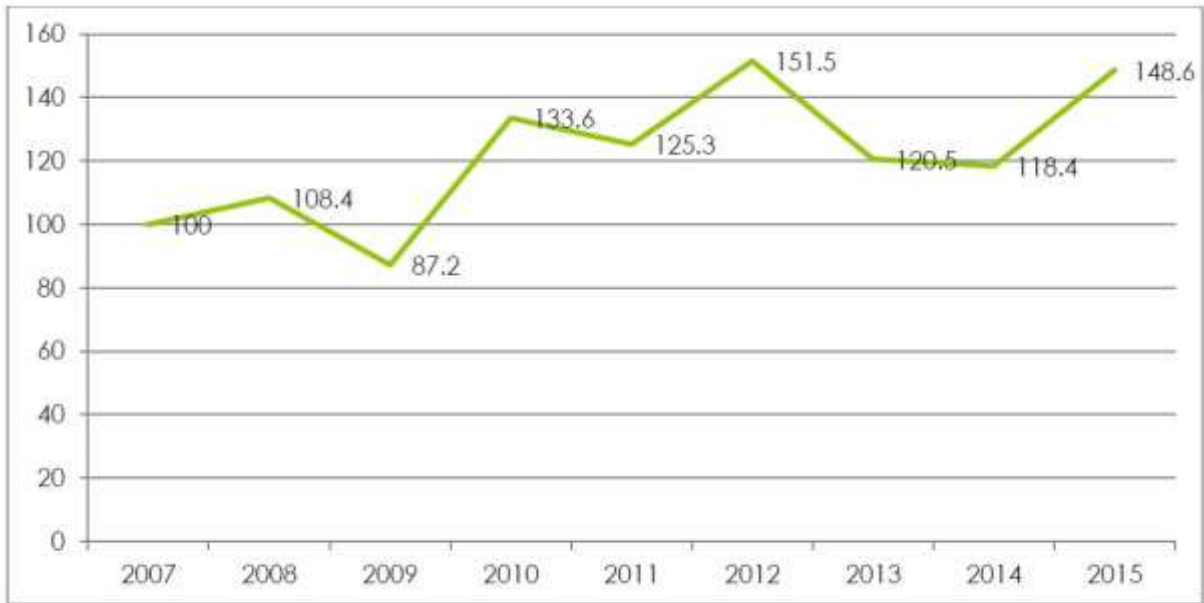
Positive net immigration, along with a small natural increase in population, has driven an increase in the usually resident population to 3,398 in 2016.

The Economy

As the following graph shows, the Islands’ economy is one which is continuing to grow at a time when the GDPs of many other larger, better resourced countries have been static or even regressed. The Falkland Islands enjoy low unemployment and have a high labour force participation rate. The strong economy in the Islands provides a high standard of living for its residents and allows FIG to provide a broad range of public services. The Islands have a favourable demographic makeup with a young population and a low dependency ratio by developed world standards.

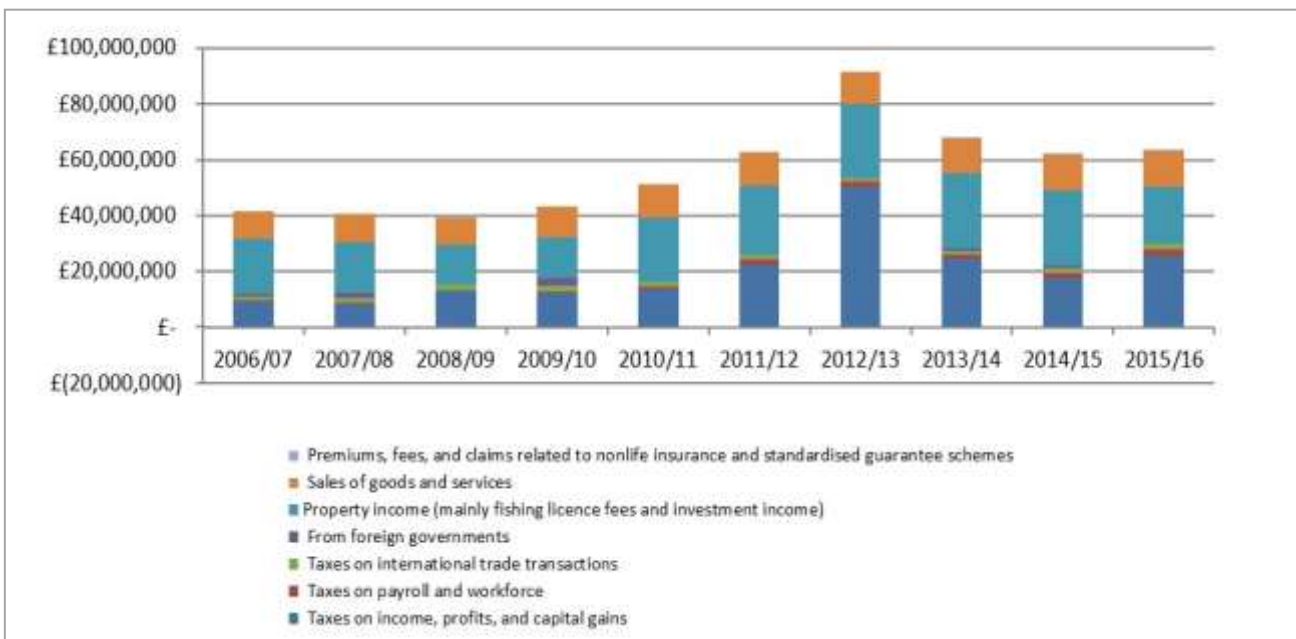
The Islands' GDP up to 2015 is demonstrated in the chart below:

Indexed Falkland Islands gross domestic product 2007-2015 (2007=100)



The main economic driver since the late 1980s has been commercial fishing, with the establishment of a controlled conservation zone in 1987, now at 200 nautical miles from the coastal baseline. Fishing vessels in the zone catch around 200,000 tonnes each year, principally *Illex* and *Loligo* squid. Revenues to FIG are between £10 million and £20 million per year from licence or quota fees, as illustrated in the following table. In some recent seasons there have been downturns in catches, but the existence of the Government's substantial cash reserves has proved invaluable in smoothing economic fluctuations. The commercial fishing industry remains a buoyant sector today and revenue from the fishery is the main income source for FIG although oil exploration activities have also boosted GDP in previous years. The graph below highlights the Government's revenue stream.

Falkland Islands Government Revenues by GFS Category, 2006/07 to 2015/16



New business opportunities also include increasing tourism (currently earning around £9m million per annum), aquaculture and hydrocarbons. Wells drilled in 1997 found evidence of a potentially significant oil field and a round of exploration commenced in late 2009. One major discovery has been made, alongside two minor ones and it is hoped this will be developed in conjunction with the 'Sea Lion' oil field in due course. In addition, there have been two gas discoveries, although more exploration work will be required in order to fully understand the extent and nature of the finds.

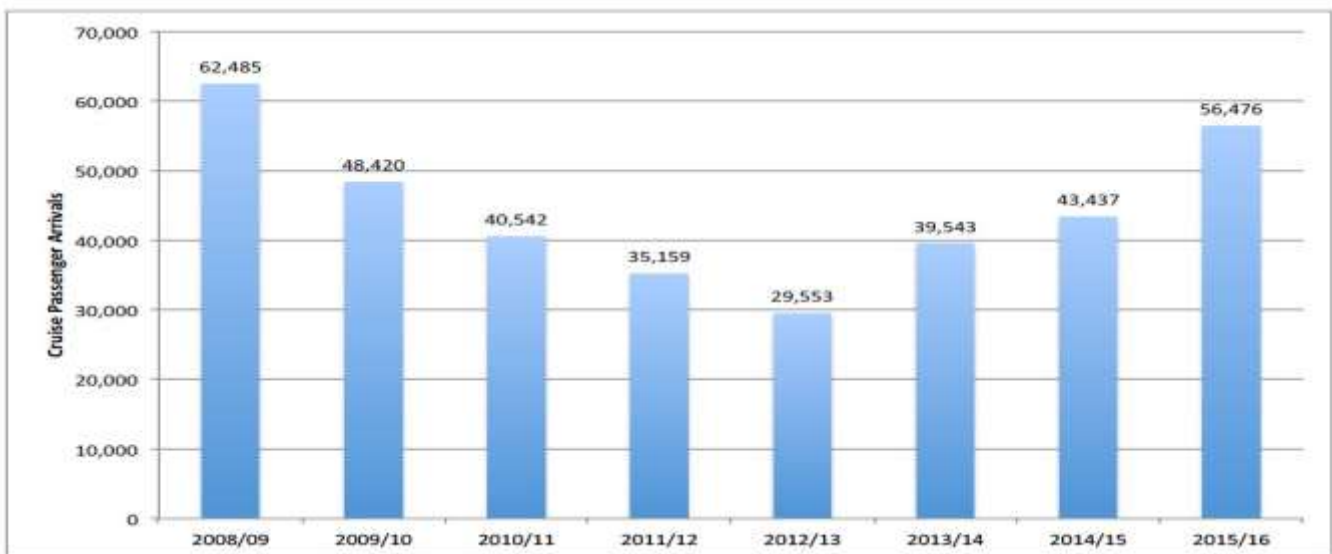
Small businesses have also been helped to establish and grow by the Falkland Islands Development Corporation. It has facilitated over a 145 business start-ups, and over 1400 projects. Further information about the Corporation is available at: <http://www.fidc.co.fk>

Tourism

Air connections to the Islands include two flights a week by Ministry of Defence Chartered Airline from Brize Norton, Oxfordshire, and a weekly LAN Chile flight service connection to South America. The Islands are keen to develop these connections.

During the summer months, the Islands are visited by an ever-increasing number of cruise ships. We can receive anything up to 50,000 cruise ship tourists per year.

The recorded number of visits and passengers since 2009 are shown in the following table:



Geography/Climate

The Falkland Islands are located in the South Atlantic on the same latitude as London lies north. They comprise two main Islands (East and West Falkland) and some 700 smaller islands, set 400 miles from the South American mainland and 8000 miles from the UK.

The maps below show where the Islands lie in relation to South America and give an overview of the Islands themselves and their main settlements.



The temperature varies between a maximum of 24°C in January down to a minimum of minus 5°C in July/August. Rainfall is generally low, winters are not as severe as the UK and the Islands enjoy more sunshine per annum than the south of England.

The countryside is comparatively bare of forestry, but it has its own unique flora and fauna. In geographical terms the Islands have a fascinating history that has resulted in some striking natural features such as the impressive rock formations known as 'stone runs', but which are actually rivers of angular quartzite. Bird and marine mammal wildlife also abound.

The Islands are also home to vast colonies of penguins and albatross, as well as over 200 species of other birds. They are also popular breeding grounds for sea lions, elephant and fur seals and over 15 species of whales and dolphins.

The protection of this unspoiled environment is a high priority in the Islands Plan and FIG spends around £1.5m per annum in environmental research with university partners from Imperial College London, Queens University Belfast, British Geological Survey and an independent local trust, Falklands Conservation.

The South Atlantic Environment Research Institute (SAERI) has also been set up to encourage growth in the level of research undertaken in the Islands and to develop the location as an international research platform.

More details on Falklands Conservation can be found on www.falklandsconservation.com

Islands Living – key facts

Currency & Banking:

The currency of the Falkland Islands is the Falkland Islands Pound (FKP) which has the same value as Sterling when used in the Falkland Islands. British pounds are legal tender throughout the islands and dollars are also accepted in some locations. The Falkland Islands Pound cannot be exchanged outside of the islands but Bank of England notes are accepted. Standard Chartered bank is the only commercial bank on the Islands and new accounts can be set up to allow salary payment and transfers to and from UK banks.

Electricity:

The electrical current is 220/240 volts, 50 Hz. Standard British appliance plugs will work in the Falklands. Household electricity is paid for by Electric Card which can be purchased at various outlets in Stanley.

Fuel:

Diesel and Petrol prices are lower than in the United Kingdom. Bottled Gas (propane) is comparable to UK prices. Stanley Services is the provider of fuel on the islands - www.stanley-services.co.fk

Telecommunications:

Sure Telecoms provides telecommunication services in the Falkland Islands. This includes telephone and internet services. Being remote means that there is a reliance on a satellite link. Accordingly internet speeds are slower in comparison to UK fibre optic, and services are more expensive. A monthly internet package allowing about 12000 of data will cost around £75. Internet access between midnight and 06:00 am is currently free to service account holders. Further information can be obtained from their website at www.sure.co.fk

Shopping:

Stanley has two supermarkets and a number of smaller convenience stores. These are stocked with a good selection of imported goods (canned, frozen and other packaged foods). Supplies of fruit and vegetables are grown locally or imported from South America. These in particular can be in limited supply and more expensive than the UK. Fresh local produce such as beef/lamb is readily available and of good quality and typically less expensive than the UK.

Eating out:

Stanley has two good quality restaurants serving a range of local food. There is also a diner and some of the local pubs provide bar meals.

Falkland menus feature locally grown produce such as lamb, beef and vegetables, as well as seafood caught both inshore and offshore. Strong links with Chile mean that a range of excellent wines are also available from South America.